

Grand Bundle PDF Course 2021

Exams Covered:

**SBI Clerk | SBI PO | IBPS RRB PO |
IBPS RRB Clerk | IBPS PO | IBPS Clerk**

Seperate PDF Course for All Major Bank pre + Mains Exams

- Total No.of Ques: **40,000+**
- Question in Bilingual (**Eng & Hindi**)
- Answers With Detailed **Video Solution**
- Provides you **50 days Study Planner** for each exams
- **Covers All Types** of Questions in Each Topic
- Questions in **Exact Exam Level**
- All Our PDFs are **Downloadable**
- **100% Satisfaction** Assured & It's Worthy for your money
- Download as PDF & also take **Quiz with Timer**



Grab It Now

Yearly Platinum Package

All Bank + Insurance + Railway + SSC Exams

1 Year Validity

- ✓ 3000+ Mock Test Series
- ✓ Full-Test, Sectional tests, Topic Tests, eBooks
- ✓ Best Quality Questions Based on Real Exams
- ✓ 24*7 Access on Website and Mobile app



Enroll now

[Click Here for IBPS RRB PO Prelims Test Series 2021](#)

[Click Here for IBPS RRB PO Prelims Bundle PDF Course](#)

Note: You can also take this Memory Based Questions asked in IBPS RRB PO Pre 2021 Exam Held on 1st Aug as Online Mock Test, [Click Here to Take Online Mock Test](#)

[Click Here For Grand Bundle PDF Course Combo \(Prelims + Mains\) 2021](#)

[Click Here to Subscribe Our Yearly Platinum Package](#)

Reasoning Ability

Directions (1-5): Study the following information carefully and answer the questions given below.

Eight persons are sitting in two rows and facing towards each other. In Row1, P, R, S and T are facing towards south. In row2, A, B, C and D are facing towards north. They like different flowers- Hibiscus, Lily, Lotus, Marigold, Pang, Rose, Sunflower and Tulip. All the information is not necessarily in the same order.

A sits facing towards the one who sits to the immediate right of the one who likes Rose. A doesn't sit at the ends of the row. C sits to the immediate left of B. Only one person sits between B and the one who likes Sunflower. Neither A nor B sits facing towards P, who likes Lily. T sits second to the left of P. Neither B nor C likes Pang. The one who likes Pang sits diagonally opposite to the one who likes Tulip who sits at one of the ends. R sits to the right of the one who likes Tulip. Neither R nor C likes Lotus. S sits to the left of the one who likes Hibiscus.

1) What is the position of D with respect to the one who likes Marigold?

- a) Immediate left
- b) Immediate right
- c) Second to the right
- d) Third to the left
- e) Second to the left

2) Which of the following combination is true with respect to the final arrangement?

- I. R-Rose
 - II. S-Tulip
 - III. B-Lotus
 - IV. D-Sunflower
- a) Only II and III
 - b) Only I and II
 - c) Only III and IV
 - d) Only I and III
 - e) All I, II, III and IV

3) Who among the following person likes Rose?

- a) R
- b) B
- c) C
- d) S
- e) T

4) If P and R interchange their position and A and B interchange their position, then who among the following person sits facing towards B?

- a) R
- b) P
- c) S
- d) T
- e) None of the above

5) Which of the following flower does C like?

- a) Pang
- b) Lily

- c) Sunflower
- d) Lotus
- e) Marigold

Directions (6-8): Study the following information carefully and answer the questions given below.

Point A is 10m to the north of Point B. Point C is 8m to the north of Point D. Point E is 13m to the west of Point D. Point F is 15m to the north of Point E. Point B is 20m to the west of C.

6) If point G is to the north of Point F and east of Point A, then what is the distance between points A and G?

- a) 6m
- b) 9m
- c) 7m
- d) 10m
- e) 8m

7) What is the direction of point F with respect to point A?

- a) South-east
- b) North-west
- c) North-east
- d) South
- e) South-west

8) Four of the following five are alike in a certain way and hence form a group. Which of the following one does not belong to that group?

- a) AF
- b) BE
- c) FC
- D) AD

e) EC

Direction (9-11) Study the following information carefully and answer the questions given below.

Q is the daughter of T, who is the mother-in-law of K. J is the only daughter of G, who is the paternal grandfather of L. Q is the sister-in-law of J. Q does not have any siblings. F is the mother-in-law of J and paternal grandmother of R. F has only one child.

9) If A is the son of F, then how is A related to K?

- a) Son-in-law
- b) Son
- c) Brother
- d) Brother-in-law
- e) Can't be determined

10) If J has no daughters, then how R is related to G?

- a) Nephew
- b) Son
- c) Grandson
- d) Brother
- e) Brother-in-law

11) Which of the following statement is true with respect to the final arrangement?

- a) Both L and R are of the same gender
- b) T has two children
- c) Q is the son of G
- d) Both J and Q are couples
- e) J is the sister of K

Direction (12-15): Some statements are followed by two conclusions. Study the conclusions and then decide which of the given conclusions logically follows from the given statements disregarding the commonly known facts.

12) Statements:

Only a few Colors are Paint.

All Paints are Furniture.

No Furniture is Wood.

Conclusions:

I. Some Colors are not Furniture.

II. No Paint is Wood.

A) Only conclusion I follows

B) Only conclusion II follows

C) Either conclusion I or II follows

D) Neither conclusion I nor II follows

E) Both conclusions I and II follow

13) Statements:

Only a few Peach are Avocado.

All Avocado are Fig.

Only Figs are Lime.

Conclusions:

I. Some Peach is Fig.

II. All Lime can be Avocado.

A) Only conclusion I follows

B) Only conclusion II follows

C) Either conclusion I or II follows

D) Neither conclusion I nor II follows

E) Both conclusions I and II follow

14) Statements:

Only a few Chains are Ring.

No Ring is Bangle.

No Bangle is Bracelet.

Conclusions:

I. Some Chains are not Bangle.

II. All Ring can be Bracelet.

A) Only conclusion I follows

B) Only conclusion II follows

C) Either conclusion I or II follows

D) Neither conclusion I nor II follows

E) Both conclusions I and II follow

15) Statements:

Only a few Corns are Beet.

All Beets are Mushroom.

All Mushrooms are Turnip.

Conclusions:

I. All Turnips are Beet.

II. Some Corn being Mushroom is a possibility.

A) Only conclusion I follows

B) Only conclusion II follows

C) Either conclusion I or II follows

D) Neither conclusion I nor II follows

E) Both conclusions I and II follow

Directions (16-19): Study the following information carefully and answer the below questions

Certain number of persons are sitting in the linear row facing towards north. A sits fifth to the right of K. Only two persons sit between K and M. M sits exactly in the middle of K and E. V sits to the immediate left of E. The number of persons sitting between V and M is the same as the number of persons sitting between A and G. The number of persons sitting to the left of V is

the same as the number of persons sitting to the right of G. H sits exactly in the middle of G and A. More than two persons sit between H and K. Not more than four persons sit to the right of A.

16) Who among the following person sits second to the left of H?

- a) A
- b) H
- c) K
- d) M
- e) E

17) Which of the following statement is/are true with respect to the final arrangement?

- I. G sits at the end of the row
- II. More than nine persons sit between E and A
- III. Both V and M are immediate neighbors

- a) Only I and III
- b) Only I
- c) Only I and II
- d) Only II
- e) None of the statements is false

18) What is the position of K from the left end?

- a) Sixth
- b) Fourth
- c) Eighth
- d) Seventh
- e) Fifth

19) How many persons are there in the row?

- a) 19
- b) 18
- c) 14

- d) 15
- e) 17

Directions (20-24): Study the following information carefully and answer the questions given below.

Ten persons- J, M, N, P, R, S, T, U, W, and X, attend the meeting on different months- January, February, April, May, June, July, August, October, November, and December of the same year, but not necessarily in the same order.

P attends immediately before W, where both attend in the month which has an odd number of days. Only three persons attend between W and T. Only two persons attend between T and U. The number of persons attending before U is the same as after N. S attends immediately before M but not in the adjacent month of T. Only two persons attend between X and R. Both X and J doesn't attend in the adjacent months.

20) How many persons attend the meeting between J and N?

- a) 2
- b) 4
- c) 3
- d) 5
- e) None

21) Who among the following person attends the meeting in May?

- a) T
- b) M
- c) S
- d) U

e) W

22) As many persons attend the meeting before S as after _____?

- a) J
- b) R
- c) W
- d) X
- e) M

23) Four of the following five are alike in a certain way and hence form a group. Which of the following one doesn't belong to that group?

- a) U
- b) M
- c) T
- d) R
- e) N

24) In which of the following month does U attend the meeting?

- a) August
- b) July
- c) February
- d) January
- e) November

Directions (25-29): Study the following information carefully and answer the questions given below.

Eight persons viz. A, B, C, D, E, F, G, and H are living in two different flats of a four-storey building, but not necessarily in the same order. The lowermost floor is numbered as 1 and the

floor immediately above is numbered as 2 and so on.

Note:

I. The flat P of floor 2 is immediately above the flat P of floor 1 whereas the flat Q of floor 2 is immediately above the flat Q of floor 1 and so on.

II. Flat P is to the west of flat Q.

A lives on an odd numbered floor. At least one person lives below A. The number of floors above A is the same as the number of floors below H. Both A and H live on the same type of flat. B lives north-east flat of E, who lives on the same floor with H. C lives south-east flat of F. The number of floors between F and H is the same as the number of floors between A and G. Both A and D doesn't live on the same floor.

25) Who among the following person is living on floor 2 of Flat Q?

- a) A
- b) B
- c) D
- d) H
- e) E

26) Who among the following person lives above F?

- a) H
- b) C
- c) D
- d) E
- e) G

27) In which of the following floor and flat does C live?

- a) Floor 2 Flat P
- b) Floor 3 Flat Q
- c) Floor 1 Flat Q
- d) Floor 2 Flat Q
- e) None of the above

28) Which of the following statement is/are true with respect to the final arrangement?

- a) C lives immediately below F
- b) Only one floor is there between G and A
- c) H lives in the north of C
- d) Two floors are there between E and B
- e) All are true

29) Which of the following pair of persons are living in the same type of flat?

- a) GH
- b) AB
- c) CE
- d) DH
- e) BF

Directions (30-34): Study the following information carefully and answer the below questions

Eight persons - A, B, C, D, E, F, G, and H, are sitting on the circular table in such a way that four of them faces inside and the rest faces outside the table but not necessarily in the same order.

Two persons sit between D and G. Three persons sit between D and A, who sits to the

immediate right of G and vice versa. Both D and A are facing the same direction. F sits third to the right of A. The immediate neighbors of F face opposite directions i.e., if one face inside the other face outside and vice versa. B sits second to the right of C, both are facing the same direction. Both A and B are facing opposite directions. Both F and H are facing the same direction. E does not face inside of the table.

30) Who among the following person sits to the immediate right of E?

- a) A
- b) G
- c) C
- d) F
- e) None of these

31) Who among the following person sits opposite to C?

- a) D
- b) E
- c) F
- d) G
- e) A

32) If A is related to G and D is related to B in a certain way, then who among the following person is related to C?

- a) F
- b) E
- c) A
- d) H
- e) None of these

33) How many persons are sitting between H and G, when counted from the right of G?

- a) None
- b) Two
- c) Three
- d) Four
- e) One

34) Which of the following statement(s) is/are true with respect to the final arrangement?

- I) Both E and F are immediate neighbors
- II) Both A and F faces the same direction
- III) H sits second to the right of D

- a) Only I
- b) Only I and II
- c) Only III
- d) Only I and III
- e) All I, II, and III

Direction (35-38): In each of the following questions, the relationship between different elements is shown in the statements followed by two conclusions. Find the conclusion which logically follows.

35) Statements:

$$X < W \leq F = Q \geq P = T \geq O \geq S = R$$

Conclusions:

- I. $Q > R$
- II. $Q = R$
- a) Only conclusion I follows
- b) Only conclusion II follows
- c) Either conclusion I or II follows
- d) Neither conclusion I nor II follows

e) Both conclusions I and II follow

36) Statements:

$$P \geq N = G > T < K > L$$

Conclusion:

- I. $G < K$
- II. $P > T$
- a) Only conclusion I follows
- b) Only conclusion II follows
- c) Either conclusion I or II follows
- d) Neither conclusion I nor II follows
- e) Both conclusions I and II follow

37) Statements:

$$Q \leq V < B = F \geq G < N < M < J = I$$

Conclusions:

- I. $Q < F$
- II. $V < J$
- a) Only conclusion I follows
- b) Only conclusion II follows
- c) Either conclusion I or II follows
- d) Neither conclusion I nor II follows
- e) Both conclusions I and II follow

38) Statements:

$$Q > K > L \leq C = H > I$$

Conclusion:

- I. $K > I$
- II. $H > L$
- a) Only conclusion I follows
- b) Only conclusion II follows
- c) Either conclusion I or II follows
- d) Neither conclusion I nor II follows

e) Both conclusions I and II follow

39) How many such pairs of letters are there in the word "SYLLABUS" each of which has as many letters between them in the word as there are in the English alphabetical series (from both forward and backward direction)?

- a) One
- b) Two
- c) Four
- d) None
- e) Three

40) If a four letter meaningful word can be formed by using the first, third, sixth, and ninth letters of the word "PRESIDENT", then what is the first letter from the left end of the newly formed word? Mark X as your answer if more than one word is formed. Mark Z if no meaningful word can be formed.

- a) D
- b) E
- c) T
- d) X
- e) Z

Quantitative Aptitude

Directions (41-46): Find out the wrong number in the following number series.

41) 800,2400,6000,12000,18000,15000,9000

- a) 18000
- b) 15000
- c) 9000
- d) 12000

e) 2400

42) 9, 89, 161, 224, 281, 329

- a) 224
- b) 329
- c) 161
- d) 281
- e) 89

43) 9, 58, 42, 91, 76, 124

- a) 9
- b) 58
- c) 76
- d) 91
- e) 124

44) 156, 444, 324, 372, 336, 354

- a) 444
- b) 336
- c) 372
- d) 354
- e) 324

45) 1300, 1272, 1208, 1081, 864, 520

- a) 1081
- b) 1208
- c) 520
- d) 1272
- e) 864

46) 4, 8, 60, 420, 3780, 41580

- a) 8
- b) 3780
- c) 420
- d) 41580
- e) 60

Directions (47-52): Following question contains two equations as I and II. You have to solve both equations and determine the relationship between them and give an answer as,

47)

I) $x^2 = 25$

II) $y^4 = 625$

- a) $x > y$
- b) $x \geq y$
- c) $x = y$ or relationship can't be determined.
- d) $x < y$
- e) $x \leq y$

48)

I) $2x^2 - 8x + 6 = 0$

II) $y^2 - 6y + 9 = 0$

- a) $x > y$
- b) $x \geq y$
- c) $x = y$ or relationship can't be determined.
- d) $x < y$
- e) $x \leq y$

49)

I) $6x^2 - 13x + 6 = 0$

II) $y^2 - 9y + 18 = 0$

- a) $x > y$
- b) $x \geq y$
- c) $x = y$ or relationship can't be determined.
- d) $x < y$
- e) $x \leq y$

50)

I) $x^2 - 16x - 36 = 0$

II) $y^2 - 12y - 45 = 0$

- a) $x > y$
- b) $x \geq y$
- c) $x = y$ or relationship can't be determined.
- d) $x < y$
- e) $x \leq y$

51)

I) $5x^2 + 12x + 7 = 0$

II) $5y^2 - 11y + 6 = 0$

- a) $x > y$
- b) $x \geq y$
- c) $x = y$ or relationship can't be determined.
- d) $x < y$
- e) $x \leq y$

52)

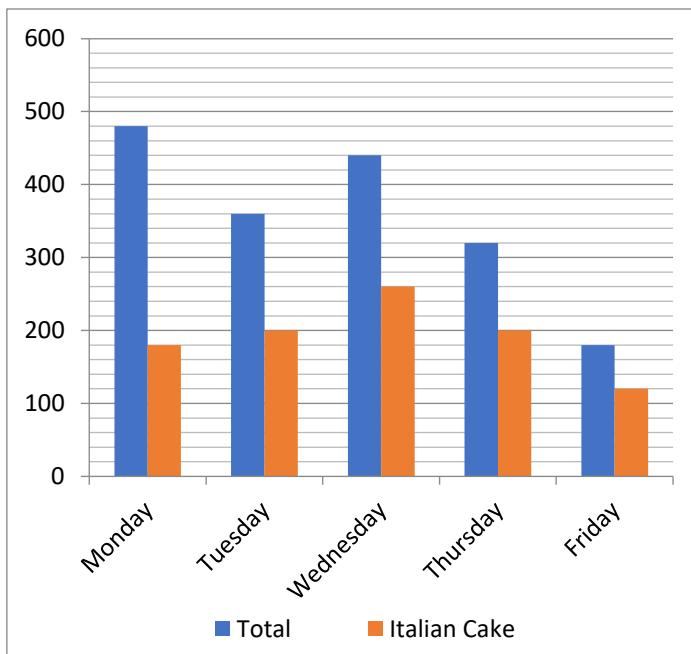
I) $x^2 + 14x + 33 = 0$

II) $y^2 - 7x - 30 = 0$

- a) $x > y$
- b) $x \geq y$
- c) $x = y$ or relationship can't be determined.
- d) $x < y$
- e) $x \leq y$

Directions (53-58): Study the following information carefully and answer the questions given below.

The given bar graph shows the total number of cakes (Italian and Garlic Cake) and the number of Italian cakes sold on five different days in a week.



53) The number of Garlic cakes sold on Tuesday is what percent of the number of Italian cakes sold on Thursday?

- a) 75%
- b) 80%
- c) 70%
- d) 60%
- e) 65%

54) What is the ratio of the number of garlic cakes sold on Tuesday and Wednesday together to the number of Italian cakes sold on Thursday and Friday together?

- a) 17:15
- b) 17:14
- c) 9:8
- d) 19:15
- e) 17:16

55) If an Italian cake cost is Rs.40 and a garlic cake cost is Rs.45 on Wednesday, then the revenue generated by Italian cake on Wednesday is what percent more than the revenue generated by garlic cake on Wednesday? (Approximately)

- a) 28%
- b) 30%
- c) 31%
- d) 32%
- e) 27%

56) Find the average number of garlic cakes sold on all the five days together.

- a) 164
- b) 166
- c) 168
- d) 162
- e) 160

57) The number of Garlic cakes sold on Saturday is 40% more than that of Friday and the total number of cakes sold on Saturday is 384. Find the difference between the number of Italian cakes sold on Saturday and Garlic cakes on Monday.

- a) 120
- b) 100
- c) 80
- d) 150
- e) None of these

58) The total number of cakes sold on Sunday is 25% more than the average number of Italian cakes sold on all five days together and the number of garlic cakes sold on Sunday is 40% of the total number of cakes sold on that day. Find the number of Italian cakes sold on Sunday.

- a) 144
- b) 132

- c) 168
- d) 172
- e) 128

Directions (59-64): Study the following information carefully and answer the questions given below.

The given table shows the total number of cars (SUV, Sedan and HUV) sold and the number of SUV and Sedan cars sold in five different showrooms-A, B, C, D and E.

Showrooms	Total	SUV	Sedan
A	640	180	140
B	400	150	130
C	500	140	120
D	300	70	80
E	330	60	90

59) What is the difference between the number of SUV and sedan cars sold in B and HUV cars sold in C?

- a) 20
- b) 30
- c) 40
- d) 50
- e) 60

60) Find the average number of HUV cars sold in B, D and E.

- a) 130
- b) 140

- c) 150
- d) 120
- e) 160

61) What is the total number of HUV and SUV cars sold in B and the number of Sedan and SUV cars sold in C?

- a) 510
- b) 520
- c) 540
- d) 530
- e) 550

62) The number of HUV cars sold in A and E together is what percent of the total number of sedan cars sold in all the showrooms together? (Approximately)

- a) 89%
- b) 91%
- c) 87%
- d) 85%
- e) 93%

63) The number of HUV cars sold in F is 25% more than that of A and the number of sedan cars sold in F is 35 more than that of D. Then find the difference between the number of HUV and sedan cars together sold in F and B.

- a) 260

- b) 255
- c) 250
- d) 265
- e) 270

64) The total number of SUV cars sold in A, D and E together is what percent of the total number of HUV cars sold in all the showrooms together? (Approximately)

- a) 31%
- b) 33%
- c) 29%
- d) 23%
- e) 27%

Directions (65-69): Study the following information carefully and answer the questions given below.

There are two buses A and B and each bus has male, female and child passengers. The total number of passengers in both buses together is 440. The total number of male passengers in all the buses together is 60% of the total number of female passengers in bus A and B together. One-fourth of the passengers in B is child. The number of male passengers in A is 50% more than that of B. The ratio of the number of child to female passengers in A is 5:8. Total number of child passengers in all the buses together is

equal to the total number of male passengers in all the buses together. The number of female passengers in B is 32 more than the number of child passengers in the same bus.

65) What is the difference between the number of female passengers in A and the number of child passengers in B?

- a) 88
- b) 90
- c) 92
- d) 96
- e) 86

66) What is the ratio of the total number of passenger in B to the total number of passenger in A?

- a) 3:7
- b) 3:5
- c) 4:7
- d) 5:6
- e) 2:5

67) The number of male passengers in C is 20% more than the number of child passengers in A and the number of male passengers in D is 25% more than the number of female passengers in B, then what is the total number of male passengers in C and D together?

- a) 196

b) 190

c) 188

d) 192

e) None of these

68) The number of female passengers in A is approximately what percent of the total number of passengers in A?

- a) 46%
- b) 49%
- c) 43%
- d) 39%
- e) 50%

69) What is the difference between the number of male and child passengers together in A and the number of male and female passengers together in B?

- a) 28
- b) 32
- c) 36
- d) 30
- e) 34

70) A set of three numbers, first number is equal to the average of second and third numbers. If the first number is 7 less than the third number and the average of first and second number is 25.5. Then find the second number.

- a) 20
- b) 22
- c) 21
- d) 23
- e) 24

71) 4 years ago the age of A is equal to the age of B after 6 years. If 10 years after the average age of A and B is 45, then find the present age of B.

- a) 20 years
- b) 25 years
- c) 30 years
- d) 40 years
- e) 35 years

72) A and B invests a certain amount in a business in the ratio of 5:6 and A invests for X month and after 1 year share of B is 10% less than the share of A, then find the value of X.

- a) 16
- b) 12
- c) 15
- d) 18
- e) 20

73) The circumference of a circle is 88 cm and the side of the square inscribed in the circle. Find the area of the square.

- a) 408 cm²
- b) 414 cm²
- c) 398 cm²
- d) 396 cm²
- e) 392 cm²

74) A invested Rs.3000 in scheme B at 10% per annum at compound interest for 2 years and he invested the interest amount earned from scheme B at 15% per annum for 3 years in a simple interest scheme. Then find the total amount which he got after 3 years from SI.

- a) Rs.910.5
- b) Rs.913.5
- c) Rs.915.5
- d) Rs.918.5
- e) None of these

75) Pipe A alone can fill a tank in 12 hours and pipe B alone can fill the tank in 18 hours. They started together to fill the tank after 4 hours pipe B has been closed. Find the time taken by A to fill the remaining tank.

- a) 6 hours 30 minutes
- b) 4 hours 40 minutes
- c) 5 hours 30 minutes
- d) 5 hours 20 minutes
- e) None of these

76) The speed of the boat is four times the speed of the stream. If the boat goes downstream 120 km in 12 hours, then find the time taken by the boat to cover 66 km upstream.

- a) 10 hours
- b) 11 hours
- c) 12 hours
- d) 6 hours
- e) 22 hours

77) The ratio of the selling price and marked price of the article is 7:8. If the difference between the marked and cost price of the article is Rs.480 and the shopkeeper earns the profit of 40%, then find the selling price of the article.

- a) Rs.1120
- b) Rs.1050
- c) Rs.1085
- d) Rs.1190
- e) None of these

78) A train crosses a 200 m long stationary train in 18 seconds and also the train crosses a man running in the opposite direction at the speed of 15 kmph in 4.8 seconds. Find the speed of the train.

- a) 40 kmph
- b) 50 kmph

- c) 60 kmph
- d) 80 kmph
- e) 70 kmph

79) If vessel A contains a mixture of milk and water in the ratio of 4:3 and vessel B contains 60 liters of a mixture of milk and water in the ratio of 7:5. If the vessel A and B mixture is mixed, then the ratio of the milk to water becomes 11:8. Then find the initial quantity of vessel A.

- a) 35 liters
- b) 28 liters
- c) 56 liters
- d) 63 liters
- e) None of these

80) Car A started from S and travels towards T at the speed of 30 kmph at 8 am and car B travels from T towards S at the speed of 40 kmph at 9.30 am. If the distance between S and T is 255 km, then how far from S will both cars meet?

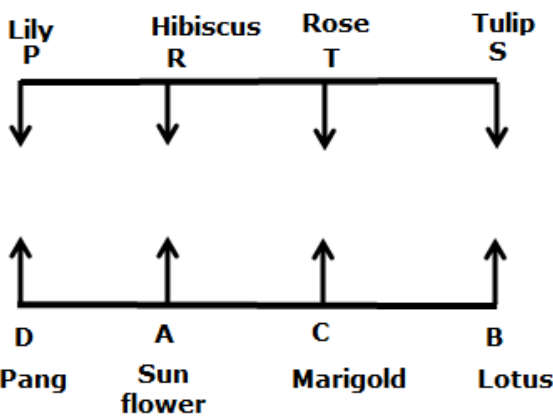
- a) 100 km
- b) 120 km
- c) 125 km
- d) 115 km
- e) None of these

Answer With Explanation

Directions (1-5):

- 1) Answer: E
- 2) Answer: A
- 3) Answer: E
- 4) Answer: B
- 5) Answer: E

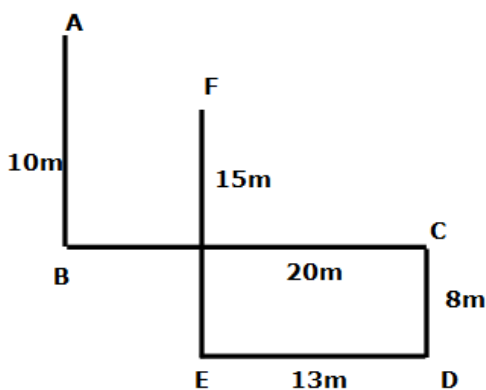
Final Arrangement



Directions (6-8):

- 6) Answer: C
- 7) Answer: A
- 8) Answer: E

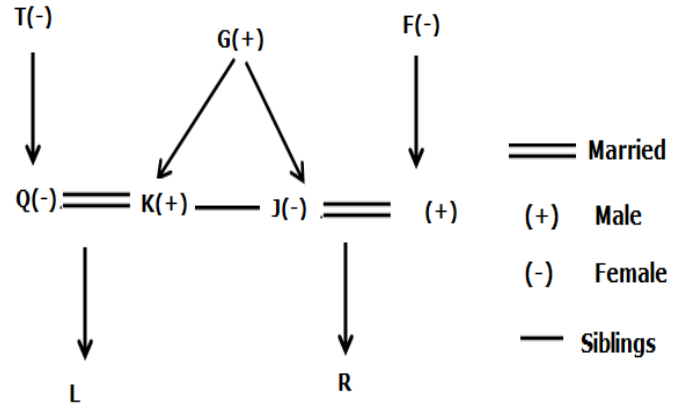
Final Arrangement



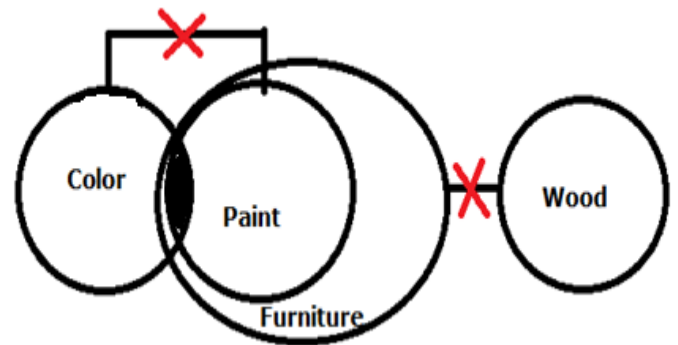
Direction(9-11)

- 9) Answer: D
- 10) Answer: C
- 11) Answer: E

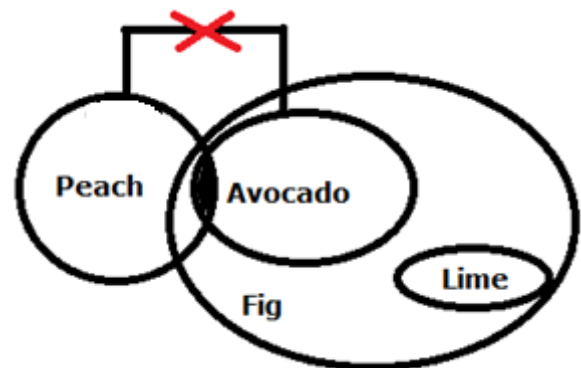
Common Explanation



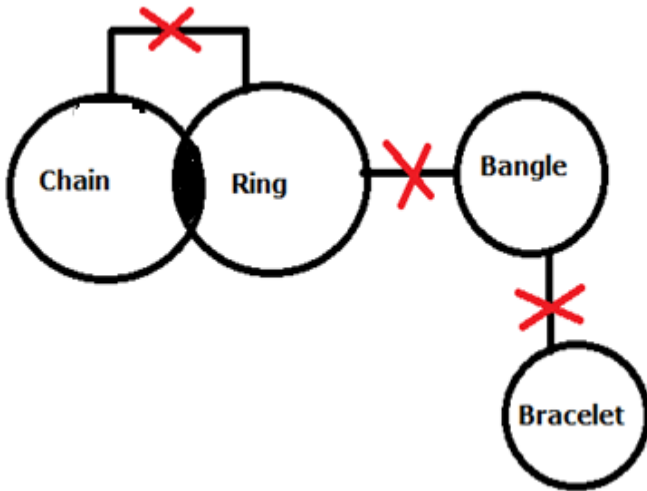
12) Answer: B



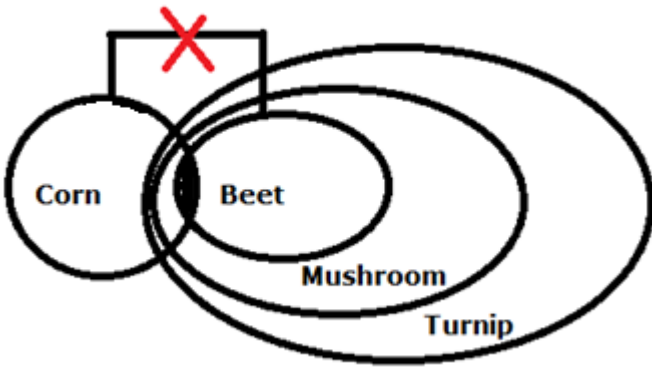
13) Answer: A



14) Answer: E



15) Answer: D



Directions (16-19):

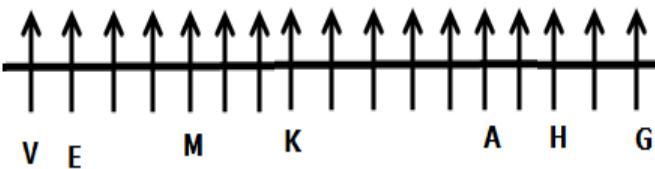
16) Answer: A

17) Answer: C

18) Answer: C

19) Answer: E

Final Arrangement



Directions (20-24):

20) Answer: B

21) Answer: A

22) Answer: D

23) Answer: B

24) Answer: D

Final arrangement

Month	Person
January	U
February	S
April	M
May	T
June	J
July	R
August	P
October	W
November	X
December	N

Directions (25-29):

25) Answer: D

26) Answer: E

27) Answer: C

28) Answer: C

29) Answer: B

Final Arrangement

Floor	Flat P	Flat Q
4	G	B
3	F	A
2	E	H
1	D	C

Directions (30-34):

30) Answer: B

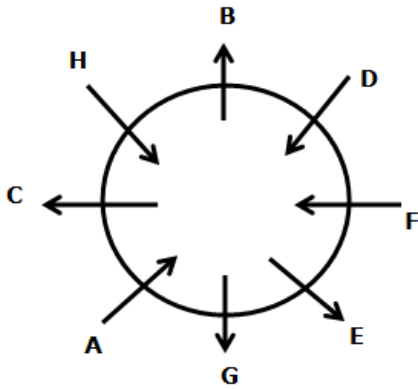
31) Answer: C

32) Answer: D

33) Answer: B

34) Answer: E

Final Arrangement



35) Answer: C

36) Answer: B

37) Answer: A

38) Answer: D

39) Answer: B

S Y L L A B U S

40) Answer: E

PRESIDENT → No words can be formed

41) Answer: B

$$800 * 3 = 2400$$

$$2400 * 2.5 = 6000$$

$$6000 * 2 = 12000$$

$$12000 * 1.5 = 18000$$

$$18000 * 1 = 18000$$

$$18000 * 0.5 = 9000$$

42) Answer: A

$$9 + 80 = 89$$

$$89 + 72 = 161$$

$$161 + 64 = 225$$

$$225 + 56 = 281$$

$$281 + 48 = 329$$

43) Answer: C

$$9 + 7^2 = 58$$

$$58 - 4^2 = 42$$

$$42 + 7^2 = 91$$

$$91 - 4^2 = 75$$

$$75 + 7^2 = 124$$

44) Answer: E

$$156 + 288 = 444$$

$$444 - 144 = 300$$

$$300 + 72 = 372$$

$$372 - 36 = 336$$

$$336 + 18 = 354$$

45) Answer: B

$$1300 - (3^3 + 1) = 1272$$

$$1272 - (4^3 + 1) = 1207$$

$$1207 - (5^3 + 1) = 1081$$

$$1081 - (6^3 + 1) = 864$$

$$864 - (7^3 + 1) = 520$$

46) Answer: A

$$4 * 1 = 4$$

$$4 * 3 = 12$$

$$12 * 5 = 60$$

$$60 * 7 = 420$$

$$420 * 9 = 3780$$

$$3780 * 11 = 41580$$

47) Answer: C

$$x^2 = 25$$

$$x = 5, -5$$

$$y^4 = 625$$

$$y = -5, 5$$

Relationship between x and y cannot be established.

48) Answer: E

$$2x^2 - 8x + 6 = 0$$

$$x^2 - 4x + 3 = 0$$

$$x^2 - 3x - x + 3 = 0$$

$$x(x - 3) - 1(x - 3) = 0$$

$$x = 1, 3$$

$$y^2 - 6y + 9 = 0$$

$$y^2 - 3y - 3y + 9 = 0$$

$$y(y - 3) - 3(y - 3) = 0$$

$$y = 3, 3$$

$$x \leq y$$

49) Answer: D

$$6x^2 - 13x + 6 = 0$$

$$6x^2 - 4x - 9x + 6 = 0$$

$$2x(3x - 2) - 3(3x - 2) = 0$$

$$x = 3/2, 2/3$$

$$y^2 - 9y + 18 = 0$$

$$y^2 - 6y - 3y + 18 = 0$$

$$y(y - 6) - 3(y - 6) = 0$$

$$y = 6, 3$$

$$x < y$$

50) Answer: C

$$x^2 - 16x - 36 = 0$$

$$x^2 - 18x + 2x - 36 = 0$$

$$x(x - 18) + 2(x - 18) = 0$$

$$x = 18, -2$$

$$y^2 - 12y - 45 = 0$$

$$y^2 - 15y + 3y - 45 = 0$$

$$y(y - 15) + 3(y - 15) = 0$$

$$y = 15, -3$$

Relationship between x and y cannot be established.

51) Answer: D

$$5x^2 + 12x + 7 = 0$$

$$5x^2 + 5x + 7x + 7 = 0$$

$$5x(x + 1) + 7(x + 1) = 0$$

$$X = -1, -7/5$$

$$5y^2 - 11y + 6 = 0$$

$$5y^2 - 6y - 5y + 6 = 0$$

$$5y(y - 1) - 6(y - 1) = 0$$

$$y = 1, 6/5$$

$$x < y$$

52) Answer: E

$$x^2 + 14x + 33 = 0$$

$$x^2 + 11x + 3x + 33 = 0$$

$$x(x + 11) + 3(x + 11) = 0$$

$$x = -11, -3$$

$$y^2 - 7x - 30 = 0$$

$$y^2 - 10x + 3x - 30 = 0$$

$$y(y - 10) + 3(x - 10) = 0$$

$$y = 10, -3$$

$$x \leq y$$

53) Answer: B

$$\text{Garlic cakes sold on Tuesday} = (360 - 200) = 160$$

$$\text{Required percentage} = 160/200 * 100 = 80\%$$

54) Answer: E

$$\text{Garlic cakes sold on Tuesday} = (360 - 200) = 160$$

$$\text{Garlic cakes sold on Wednesday} = (440 - 260) = 180$$

$$\text{Required ratio} = (160 + 180):(200 + 120) = 340:320 = 17:16$$

55) Answer: A

$$\text{Garlic cakes sold on Wednesday} = (440 - 260) = 180$$

$$\text{Required percentage} = \{(260 * 40 - 180 * 45)/(180 * 45)\} * 100 = 28\%$$

56) Answer: A

$$\text{Garlic cakes sold on Monday} = (480 - 180) = 300$$

$$\text{Garlic cakes sold on Tuesday} = (360 - 200) = 160$$

$$\text{Garlic cakes sold on Wednesday} = (440 - 260) = 180$$

$$\text{Garlic cakes sold on Thursday} = (320 - 200) = 120$$

$$\text{Garlic cakes sold on Friday} = (180 - 120) = 60$$

$$\text{Required average} = (300 + 160 + 180 + 120 + 60)/5 = 164$$

57) Answer: E

$$\text{Garlic cakes sold on Friday} = (180 - 120) = 60$$

$$\text{Garlic cakes sold on Monday} = (480 - 180) = 300$$

$$\text{Number of Italian cakes sold on Saturday} = 384 - \{140/100 * 60\} = 300$$

$$\text{Required difference} = 300 - 300 = 0$$

58) Answer: A

$$\text{Total Number of cakes sold on Sunday} = 125/100 * \{(180 + 200 + 260 + 200 + 120)/5\} = 240$$

$$\text{Number of Italian cakes sold on Sunday} = 240 * (60/100) = 144$$

59) Answer: C

Required difference = $(150 + 130) - (500 - 140 - 120) = 40$

60) Answer: C

Number of HUV cars sold in B = $(400 - 150 - 130) = 120$

Number of HUV cars sold in D = $(300 - 70 - 80) = 150$

Number of HUV cars sold in E = $(330 - 60 - 90) = 180$

Required average = $(120 + 150 + 180)/3 = 150$

61) Answer: D

Number of HUV cars sold in B = $(400 - 150 - 130) = 120$

Required total = $120 + 150 + 140 + 120 = 530$

62) Answer: A

Number of HUV cars sold in A = $(640 - 180 - 140) = 320$

Number of HUV cars sold in E = $(330 - 60 - 90) = 180$

Required percentage = $\{(320 + 180)/(140 + 130 + 120 + 80 + 90)\} * 100 = 89\%$

63) Answer: D

Number of HUV cars sold in A = $640 - 180 - 140 = 320$

Number of HUV cars sold in F = $320 * 125/100 = 400$

Number of Sedan cars sold in F = $35 + 80 = 115$

Number of HUV cars sold in B = $400 - 150 - 130 = 120$

Required difference = $(115 + 400) - (120 + 130) = 265$

64) Answer: A

Number of HUV cars sold in A = $(640 - 180 - 140) = 320$

Number of HUV cars sold in B = $(400 - 150 - 130) = 120$

Number of HUV cars sold in C = $(500 - 140 - 120) = 240$

Number of HUV cars sold in D = $(300 - 70 - 80) = 150$

Number of HUV cars sold in E = $(330 - 60 - 90) = 180$

Required percentage = $\{(180 + 70 + 60)/(320 + 120 + 240 + 150 + 180)\} * 100 = 31\%$

Direction (65-69):**Common Explanation:**

Total number of passengers in A and B = 440

Total number of female and Male passengers =
 $100x:60x = 5x:3x$

Total number of child passengers in all the bus
 is equal to total number of male passengers in
 all the bus = $3x$

$$3x + 5x + 3x = 440$$

$$x = 40$$

Total number of male passenger = $3 * 40 = 120$

Total number of child passenger = $3 * 40 = 120$

Total number of female passenger = $5 * 40 =$
 200

Number of male passengers in A and B =
 $150:100 = 3:2$

Number of male passengers in A = $3/5 * 120 =$
 72

Number of male passengers in B = $2/5 * 120 =$
 48

Total number of passengers in B = y

Number of child passengers in B = $y * 1/4 = y/4$

Number of female passengers in B = $y/4 + 32$

$$y/4 + 32 + 48 + y/4 = y$$

$$y = 80 * 2 = 160$$

Number of child passengers in B = $160/4 = 40$

Number of female passengers in B = $40 + 32 =$
 72

Number of passengers in A = $440 - 160 = 280$

$$280 = 72 + 5z + 8z$$

$$13z = 208$$

$$z = 16$$

Number of female passengers in A = $8 * 16 =$
 128

Number of child passengers in A = $16 * 5 = 80$

65) Answer: A

Required difference = $128 - 40 = 88$

66) Answer: C

Required answer = $160:280$

= $4:7$

67) Answer: E

Number of male passenger in C = $120/100 * 80$
 = 96

Number of male passenger in D = $125/100 * 72$
 = 90

Required total = $96 + 90 = 186$

68) Answer: A

Required percentage = $128/280 * 100 = 46\%$

69) Answer: B

Number of male and child passenger in A = $72 +$
 $80 = 152$

Number of male and female passenger in B = 48
 $+ 72 = 120$

Difference = $152 - 120 = 32$

70) Answer: B

Let the First, second and third number be F, S, T respectively.

$$F = (S + T)/2$$

$$2F = S + T \text{ ----(1)}$$

$$F + S = 25.5 * 2 = 51 \text{ ----(2)}$$

$$T - F = 7 \text{ ----(3)}$$

From (1) (2) and (3)

$$2F = 51 + 7 = 58$$

$$F = 29$$

$$T = 36$$

$$S = 58 - 36 = 22$$

71) Answer: C

$$A + B = 45 * 2 - 20 = 70 \text{ ----(1)}$$

$$A - 4 = B + 6$$

$$A - B = 10 \text{ ----(2)}$$

From (1) and (2)

$$2B = 60$$

$$B = 30 \text{ years}$$

72) Answer: A

$$\text{Profit ratio of A and B} = 100:90 = 10:9$$

$$(5 * X)/(6 * 12) = 10/9$$

$$x = 16$$

73) Answer: E

$$2 * 22/7 * r = 88$$

$$r = 14 \text{ cm}$$

$$\text{Radius of the circle} = 14 \text{ cm}$$

$$d = 2 * 14 = 28 \text{ cm}$$

$$a^2 + a^2 = d^2$$

$$d^2 = 2a^2$$

$$a = d/\sqrt{2}$$

$$\text{Area of the square} = 28/\sqrt{2} * 28/\sqrt{2}$$

$$= 392 \text{ cm}^2$$

74) Answer: B

$$CI = 3000 * 110/100 * 110/100 - 3000 = \text{Rs.}630$$

$$SI = 630 * 15 * 3/100 = \text{Rs.}283.5$$

$$\text{Total amount} = 630 + 283.5 = \text{Rs.}913.5$$

75) Answer: D

$$(x + 4)/12 + 4/18 = 1$$

$$(x + 4)/12 = 7/9$$

$$x = 16/3 \text{ hours}$$

$$x = 16/3 * 60 = 5 \text{ hours } 20 \text{ minutes}$$

76) Answer: B

$$\text{Speed of stream} = x$$

$$\text{Speed of boat} = 4x$$

$$120/(4x + x) = 12$$

$$x = 2$$

$$\text{Upstream speed} = 3x$$

$$\text{Required time} = 66/(3 * 2) = 11 \text{ hours}$$

77) Answer: A

$$SP = 7x$$

$$MP = 8x$$

$$CP = 7x * 100/140 = 5x$$

$$8x - 5x = 480$$

$$x = 160$$

$$SP = 7 * 160 = \text{Rs.}1120$$

78) Answer: C

$$\text{Length of train} = x$$

$$\text{Speed of train} = y$$

$$x + 200 = y * 5/18 * 18$$

$$x + 200 = 5y \text{-----(1)}$$

$$x = (y + 15) * 5/18 * 4.8$$

$$3x = 4y + 60$$

$$x = (4y + 60)/3 \text{-----(2)}$$

From (1) and (2),

$$(4y + 60)/3 + 200 = 5y$$

$$4y + 60 + 600 = 15y$$

$$11y = 660$$

$$y = 60 \text{ kmph}$$

79) Answer: A

$$\text{Milk in vessel B} = 7/12 * 60 = 35 \text{ liters}$$

$$\text{Water in vessel B} = 5/12 * 60 = 25 \text{ liters}$$

$$(4x/7 + 35)/(3x/7 + 25) = 11/8$$

$$32x + 1960 = 33x + 1925$$

$$x = 35 \text{ liters}$$

80) Answer: E

$$\text{Car A travelled in one and half hours is} = 30 + 15 = 45 \text{ km}$$

$$\text{They meet each other after} = (255 - 45)/(30 + 40) = 3 \text{ hours}$$

$$\text{Car A will travel for three hours} = 3 * 30 = 90 \text{ km}$$

$$\text{Required distance} = 45 + 90 = 135 \text{ km}$$

Grand Bundle PDF Course 2021

Exams Covered:

**SBI Clerk | SBI PO | IBPS RRB PO |
IBPS RRB Clerk | IBPS PO | IBPS Clerk**

Seperate PDF Course for All Major Bank pre + Mains Exams

- Total No.of Ques: **40,000+**
- Question in Bilingual (**Eng & Hindi**)
- Answers With Detailed **Video Solution**
- Provides you **50 days Study Planner** for each exams
- **Covers All Types** of Questions in Each Topic
- Questions in **Exact Exam Level**
- All Our PDFs are **Downloadable**
- **100% Satisfaction** Assured & It's Worthy for your money
- Download as PDF & also take **Quiz with Timer**



Grab It Now

Yearly Platinum Package

All Bank + Insurance + Railway + SSC Exams

1 Year Validity

- ✓ 3000+ Mock Test Series
- ✓ Full-Test, Sectional tests, Topic Tests, eBooks
- ✓ Best Quality Questions Based on Real Exams
- ✓ 24*7 Access on Website and Mobile app



Enroll now

[Click Here for IBPS RRB PO Prelims Test Series 2021](#)

[Click Here for IBPS RRB PO Prelims Bundle PDF Course](#)

Note: You can also take this Memory Based Questions asked in IBPS RRB PO Pre 2021 Exam Held on 1st Aug as Online Mock Test, [Click Here to Take Online Mock Test](#)